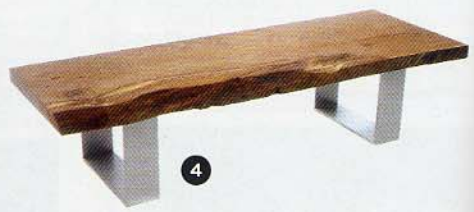
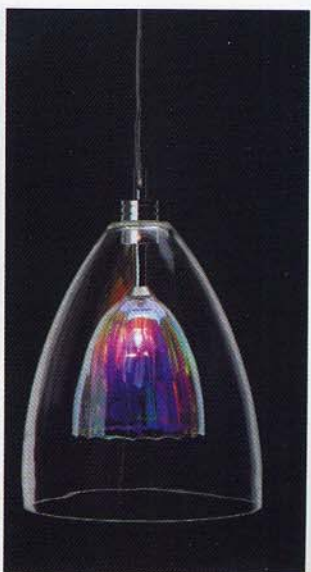


# Decoration Innovation... Inspirational Interiors!



**1. Surface View** offers unique access to some of the most exciting imagery around and creates high quality bespoke murals, canvases and blinds to suit your home. For a limited time only GQ readers can use this code for 10% off all purchases through our website. Code: GQIOSV. Call 0118 922 1327, visit [www.surfaceview.co.uk](http://www.surfaceview.co.uk) or email [info@surfaceview.co.uk](mailto:info@surfaceview.co.uk)

**2. www.trendyproducts.co.uk** Contemporary Furniture for the Modern Home. **Glass pendant light:** This stunning glass pendant light in a contemporary design, casts a delicate myriad of coloured light. Perfect for hanging over a dining table, perhaps in a group of 3, it adds style and sophistication to your interior. **Curved office chair:** Designed in Denmark, this stylish leather chair for the home or office has a curved seat and back for extra comfort. Fully adjustable height and swivel, plus a tilt feature and curved head rest, it offers total support for snatched moments of relaxation between tasks.

**Built-in Speaker iPod Docking Shelf:** Declutter your audio system and create a quality sound system with the Hohorizontal 51 speaker shelf with built in 2 x 25 watt amplifier. With docking capabilities not only for your iPod but for any range of audio players and laptops it would make a great upgrade to your wall mounted TV. Available in a range of colours and suitable for any interior room including kitchens and bathrooms, this speaker shelf has been awarded the 2011 interior innovation award. **TV Cabinet:** Create a stunning focal point in your contemporary home with our stylish multi position TV cabinet. Available in high gloss black or white it provides discreet storage for a minimalist look. Complete your designer living room with matching coffee table and wall shelves. **The Flux Chair** which was launched in 2010 is taking the Market by storm, as it offers a practical solution with a designer edge, this beautiful design piece will fold completely flat into an envelope shape and is easy to carry around and store. It can be used both indoor and outside as it is fully weatherproof. The Flux Chair is extremely comfortable and is also very strong, so strong in fact it can hold weight of up to 25 stone (160kg) and is also guaranteed for 2 years. GQ readers qualify for **15% off** their first Trendy Products order by using this code **GQTP15**. View their extensive range of contemporary furniture online at [www.trendyproducts.co.uk](http://www.trendyproducts.co.uk) or call 0845 299 4211 today.

**3. Sofa Workshop** create individual sofas for individuals. Find your perfect sofa from their standard range of over 50 styles of sofa, sofa beds, corner sofas, chairs and footstools, or they will customise one to perfectly suit your lifestyle. Choose from thousands of fabrics and leathers, including the newest fabrics from some of the best-known design houses. Handmade in Britain, their sofa frames are guaranteed. Visit their website, [www.sofaworkshop.com](http://www.sofaworkshop.com) to find your nearest shop and for more information or call one of their experienced consultants on 0844 249 9161.

**4. 21st Century Gothic** blends reclaimed, contemporary and period elements into bold and beautiful limited edition, bespoke and one off pieces. This coffee bench, combines a single piece of fallen English oak, with contemporary brushed aluminium supports. To view this and other current pieces visit [www.21stcenturygothic.co.uk](http://www.21stcenturygothic.co.uk) or call 01865 358503.

**5. Groovy Egg Chairs** provide stunning furniture and home accessories that have the 'wow' factor. The stylish and unique range of pieces that will stand out in any interior. Add the personal touch, with a selection of furniture that comes in a range of colours. There is a selection of amazing pieces at Groovy Egg Chairs, created by Reestore. These pieces are created from reclaimed items such as roll top baths and aeroplanes, to create stunning pieces of design. For more information, visit [www.groovyeggchairs.co.uk](http://www.groovyeggchairs.co.uk)

**6. You Are Art.** Commission a portrait from YouAreArt.co.uk. We work from your photos, showing you drafts and getting your feedback to create your perfect portrait. To see the range of styles we offer, visit [www.YouAreArt.co.uk](http://www.YouAreArt.co.uk) or call 020 7193 7778.

**7. Hugo Passos** an established London based designer introduces the "Piet" side table. Inspired by Dutch artist Mondrian, it is available in an array of colours and features lacquer tops and asymmetrical solid walnut legs. This piece of art will be the talking point of your home. Available at Liberty's for £325. Visit [www.hugopassos.com](http://www.hugopassos.com) or contact Hugo on +44 (0) 778 660 5122 to find out more.

**8. Swivel UK.** For the very best reproduction furniture Swivel UK is the only place to visit. With all the details and design of the originals but without the extortionate prices. Pictured here is probably the most famous Eames Lounge Chair and Ottoman at £895 and the Eames EA108 Office chair at £450. Swivel UK have been supplying the public and trade for over 5 years and still going strong. To see more fantastic reproductions visit [swiveluk.com](http://swiveluk.com) or call 020 700 7454.